



## **SERVICE INFORMATION LETTER**

**TO** : All  
**FROM** : Russell Goulden  
**SL** : SIL.FDC.AS350.0008 Rev A  
**SUBJECT** : AS350 equipped with STC SR00811SE, SR01049SE  
**EFFECT** : Differential Pressure Switch  
**DATE** : Friday, May 01, 2009

---

### **DPS – REFERENCE PORT THREAD SIZE**

Dear Customer,

The introduction of NEW vendor DPS switch FDC P/N A486-1 introduced a compatibility issue for existing installations when the DPS is located on the engine side of the firewall ONLY.

The initial issue of this SIL introduced a field fix where customers desired to keep the same mounting configuration. (DPS located on the engine firewall side).

The Field Fix is hereby cancelled and replaced by the introduction of FDC Kit available under P/N 1350K1-1.

The Kit is only required when either

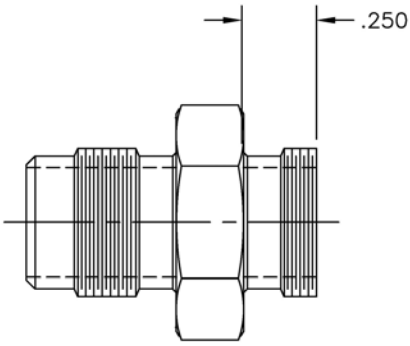
- Changing the old superseded DPS FDC P/N 98505-32210 to the latest style FDC P/N A486-1 with an engine firewall side, mounted DPS.
- Installation of a new system where the early mounting configuration is preferred

The current installation configuration is A486-1 DPS mounted on the Xmsn side of the firewall, or optionally mounted on the engine side with the 1350K1-1 Kit.

Kit P/N 1350K1-1 is procurable from FDC Customer Service

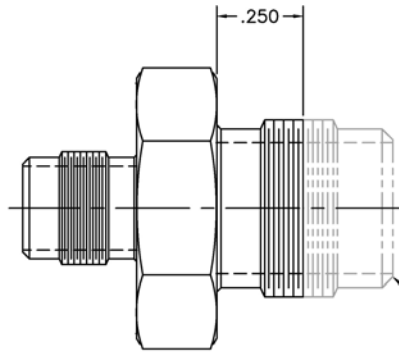
Yours Faithfully,

**Russell Goulden**  
**Vice President**  
**Director of Certification**



1350P6-103 FITTING

SCALE: N/A



REMOVE NIPPLE AND  
THREAD AS SHOWN

DEBUR CUT END. BREAK ALL SHARP  
EDGES AND REMOVE ALL HANGING  
BURRS AND SLIVERS.  
VERIFY THREADS PER MIL-S-8879

MODIFIED AN919-12D FITTING

SCALE: N/A

